

National Report of SLOVAKIA 07

Dušan FERIANC, Elena ŠALÁTOVÁ, Miroslav ROHÁČEK ¹⁾,
Jan HEFTY ²⁾

1) Geodetický a kartografický ústav Bratislava

2) Slovak University of Technology, Bratislava, Faculty of
Civil Engineering, Department of theoretical Geodesy

Brusel

18. – 20. June 2008



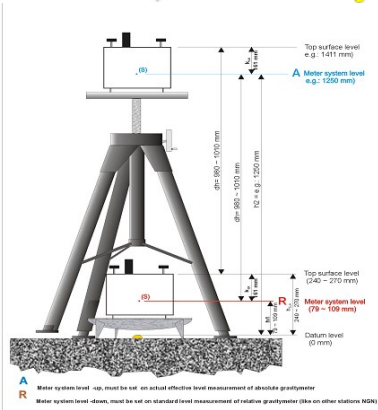
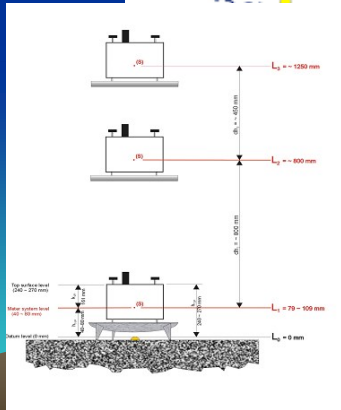
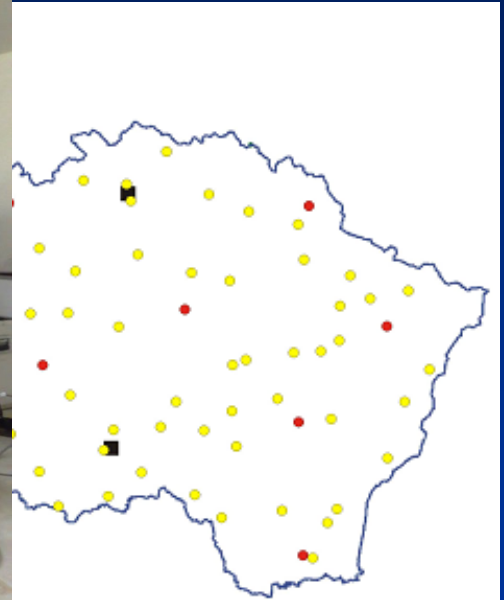
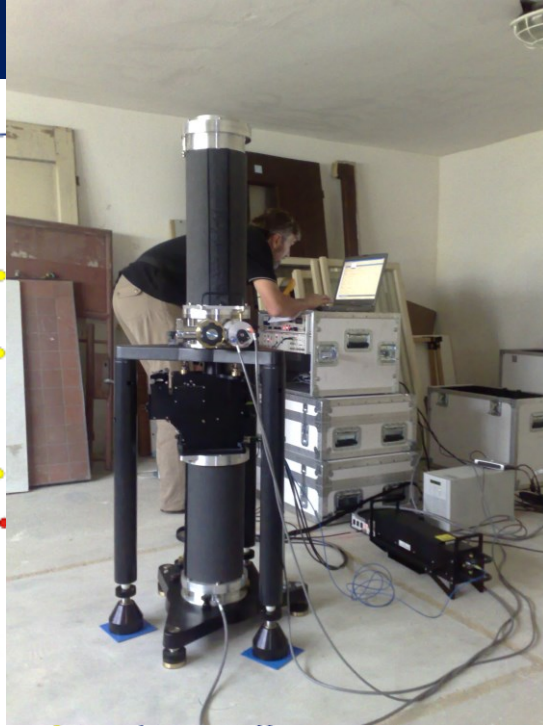
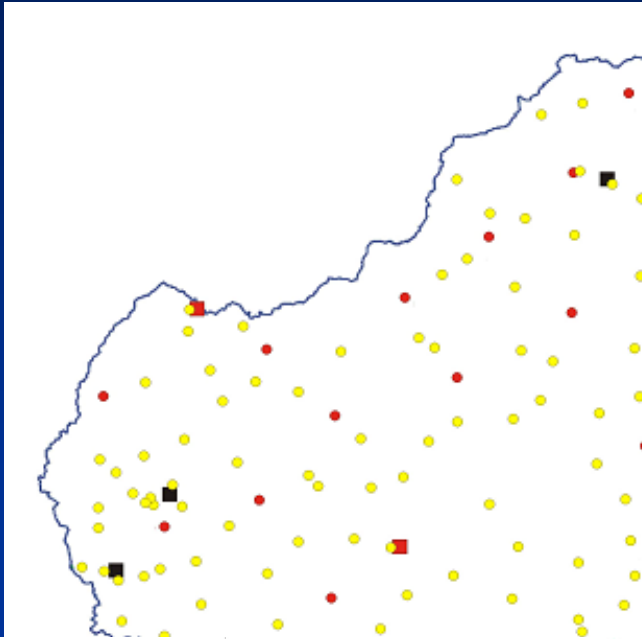
Štátna nivelačná sieť ŠNS (Bpv; Ams) National levelling network



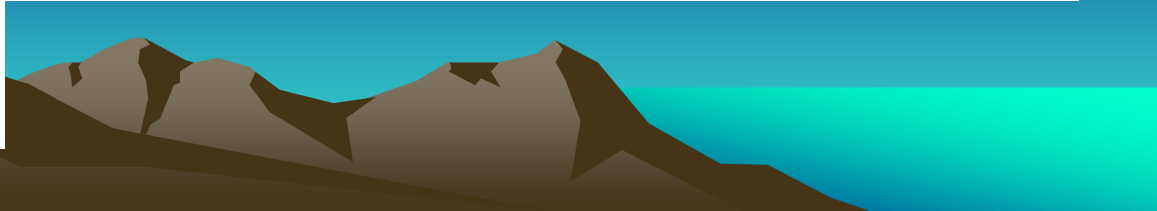


Štátna gravimetrická sieť ŠGS (UEGN)

National gravimetric network



- KEY:**
- 0 order of network – Absolute stations (measured)
 - 0 order of network – Absolute stations (prepared)
 - 1st order of network – Relative gravity stations integrated in UEGN
 - 2nd order of network – Relative gravity stations





Štátna priestorová sieť ŠPS (ETRS89) National space network

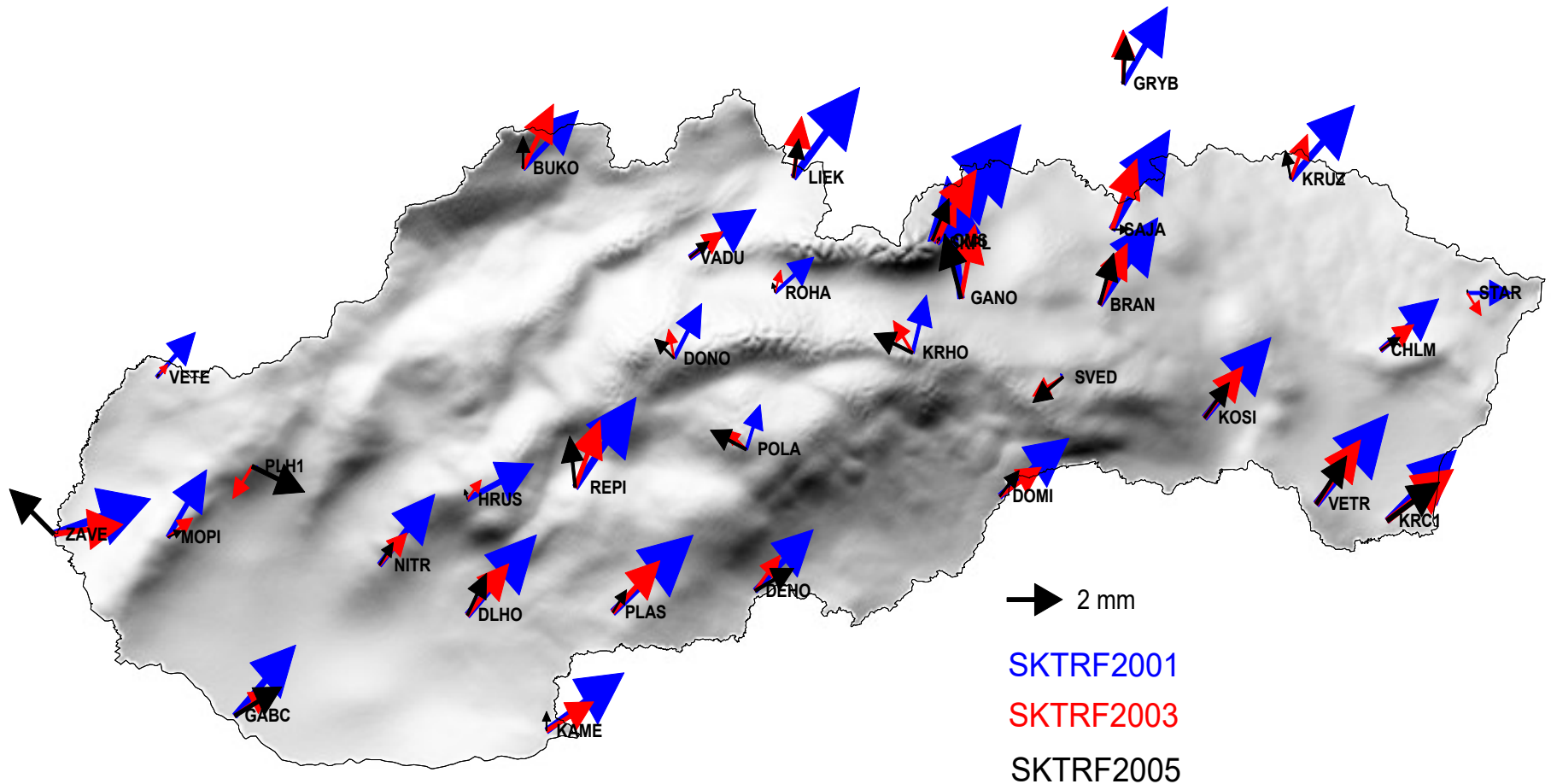
Densification and Verification
of the ŠPS class C



1700 point
702n



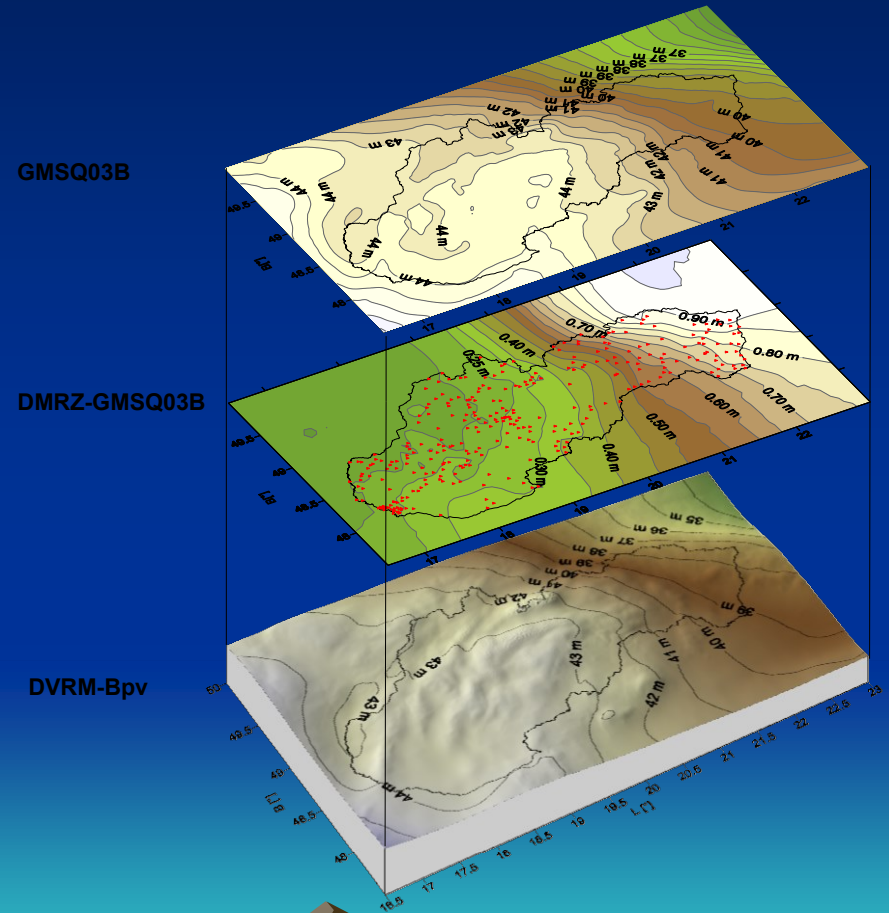
Annual Local Velocity Field on ŠPS Class „B“ - SGRN





Current Realisations of the DMRZ-JTSK and DVRM-Bpv

Trimble: DVRM.ggf
Leica: DVRM.gem
Topcon: DVRM.gff





SKPOS (ETRS89)

Infrastructure

- RS Trimble Net R5 - 21 stations
- Integrity and quality control Trimble R8
- Zephyr Geodetic Model 2 (GPS-L1,L2C,L5, GLONASS-L1,L2)
- Trimble software
- VPN-WAN UGKK SR
- ETRS89, ETRF2000, epoch 2006,6



Services

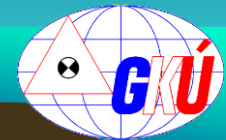
- **SKPOS-*dm*** (DGNSS)
- **SKPOS-*cm*** (RTK VRS, CMR+)
- **SSKPOS-*mm*** (RINEX 2.11 postprocessing)





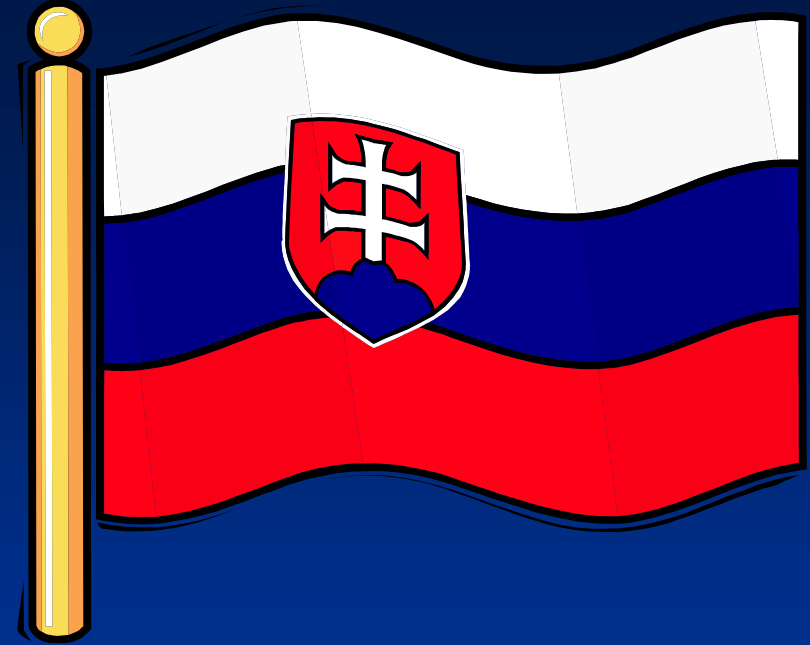
Servis

- **SKPOS-dm** – diferenciálne korekcie pre kódové merania s využitím pre navigáciu a určovanie polohy v reálnom čase s presnosťou 1 m – 0,2 m.
- **SKPOS-cm** – diferenciálne korekcie pre fázové merania na presné určovanie polohy v reálnom čase s presnosťou lepšou ako 2 cm.
- **SKPOS-mm** – kódové a fázové merania na veľmi presné určovanie polohy po ukončení merania (post-processing), resp. v blízkom reálnom čase s presnosťou 20 – 0,5 mm.





Thank You



www.gku.sk

www.skpos.gku.sk

Dusan.ferianc@skgeodesy.sk